



envu<sup>®</sup>

Plan.  
Save.  
Thrive.



## Introducing the Specticle® FLO Loyalty Bonus!

October 1st to December 6th, 2024 save in 4 different ways

Off-invoice discounts, select product rebates, Specticle Loyalty Bonus, FALL Purchase Tier Rebates

June 6, 2025 payment terms on Fall Program Agency purchases

Easily calculate your savings

Visit [rewards.envu.us](https://rewards.envu.us) to enroll in our benefits-filled Rewards Program, plus download an easy-to-use calculator spreadsheet

Unlock:

## Specticle Loyalty Bonus Program!

**1** Choose your desired quantity of Specticle FLO to unlock your discount

**2** Select up to 4 additional brands to add to your pairing and receive an additional bonus percent off the entire pairing. Select product rebates also apply.

Step 1: Choose the Desired Specticle Qty to Unlock Additional Bonus %					Specticle Loyalty Bonus Pairing			Saving % + Max Loyalty Bonus***† (Specticle FLO counts for tier rebate, but not paid on tier rebate)
Brand	Size	Qty	EOP Price*	Savings off in-season price (\$2,072)	Add eligible brands in step 2 at select rebate quantities to Specticle FLO purchase and receive bonuses the more brands you buy.			
					Add 1 Brand	Add 2 Brands	Add 3+ Brands	
Specticle FLO	1 gal	1 to 6	\$1,968.40	5%	0.25%	0.50%	1%	6.0%
		7 to 13	\$1,895.88	8.5%	0.50%	1%	2%	10.3%
		14 to 25	\$1,657.60	20%	0.75%	1.50%	3%	22.4%
		26+	\$1,533.28	26%	1%	2%	4%	29.0%

Step 2: Pick your Eligible Brands to Earn Specticle Loyalty Bonus					Example Add'l Rebate % with 26+ bottles of Specticle FLO			Saving % + Max Loyalty Bonus***† Tier Rebate (9%)***†
Eligible Brands	Size	Min Qty (bottles)	EOP Price*	Select Rebate***† (per unit)	1%	2%	4%	
Celsius®	10 oz	8	\$128.40	\$10				
Celsius XTRA	10 oz	8	\$166.40	\$10				19.0%
Tribute® Total	6 oz	6	\$413.60	\$30				20.3%
Revolver®	87 fl oz	4	\$758.00	\$35				17.6%

Insecticides	Size	Qty	EOP Price*	Select Product Rebate**†	Select, Pairing and Volume Discount Savings %***†	Saving % + Max Purchase Tier Rebate (9%)***†
Altus®	64 fl oz	1 to 15	\$428.40			9%
		16 to 31	\$406.98		5%	14%
		32+	\$385.56		10%	18%
Tetrino®	1 gal	1	\$498.00	\$25.00 (4 or more)	5%	14%
Chipco® Choice ◇	50 lb	1	Non-Agency			9%
Dylox® 420SL	2.5 gal	1	Non-Agency			9%
Forbid®	8 oz	1	Non-Agency			9%
Merit® 75 WSP	4 x 1.6 oz	1	Non-Agency			Purchases count for tier rebate but are not paid tier rebate
Merit 2F	1 gal	1	Non-Agency			
TopChoice® ◇	50 lb	1	Non-Agency			
<b>Fungicides</b>						
Armada® 50 WDG	2 lb	1	Non-Agency	\$24.00 (1 or more)		9% + Select Rebate
Castlon™	1 pint	1	\$366.50			9%
<b>Herbicides</b>						
Specticle G	50 lb	1	\$128.00	\$11.50 (20 or more)	9%	18%
Acclaim® Extra	1 gal	1	Non-Agency	\$90.00 (1 or more)		9% + Select Rebate
Acclaim Accelerate	0.5 gal & 2.5 gal	1	Non-Agency	5%		
Terradex Crabgrass & Broadleaf	1 gal & 2.5 gal	1	Non-Agency	5%		
Terradex Quick Strike	1 gal, 2.5 gal & 30 gal	1	Non-Agency	5%		
Terradex Power Premix	2.5 gal & 30 gal	1	Non-Agency	5%		
Revolver	32 fl oz	1	Non-Agency			9%
Ronstar® FLO ◇	2.5 gal	1 to 11	\$552.00			Purchases count towards NOW/Fall rebate tier but do not receive a rebate
		12 to 39	\$453.00		18%	
		40+	\$393.00		29%	
Progress® EC	2.5 gal	1	Non-Agency			



### Easily Calculate Your Savings.

Visit [rewards.envu.us](https://rewards.envu.us) to enroll in our rewards program and download an easy-to-use calculator spreadsheet. Scan to the QR code to the left.

Total Purchases (NOW/Fall Solutions)*	Base Incentive**†	August 1 October 31 Bonus***†	Base * Bonus***†
\$5,000 - \$13,999	3%	1%	4%
\$14,000 - \$22,499	4%	1%	5%
\$22,500 - \$31,499	5%	1%	6%
\$31,500 - \$39,999	6%	1%	7%
\$40,000 - \$48,499	8%		8%
\$48,500	9%		9%

Pricing for all states except CA or WA. Must be purchased on a single invoice to receive volume discount price. Purchase tier amount credited for non-agency products is predetermined by Envu. \*\*Must be registered in My Envu Rewards and accept current Terms and Conditions to participate. \*\*\*Savings compared to 1 unit at the National price. †Customer Fall Solutions and NOW Solutions promotional cumulative purchases (Aug. 1 - Dec. 6, 2024) must be \$5,000 or more to qualify for program rebates. New members signed up before Dec. 31, 2024, will receive 2024 NOW/Fall Solutions rebates. All rebates for 2024 NOW/Fall Solutions will be paid in points, which can be redeemed for thousands of catalog items, distributor credits and/or company checks (no checks can be issued to a third party). All products must be invoiced between Aug. 1 and Sept. 30, 2024, to qualify for NOW Solutions. Rebate calculations will be based on the date of actual product invoice and calculator tools are provided for estimation purposes only. Rebates will only be paid or delivered to the company or name listed on the invoice. Please allow for rebates to be fulfilled by July 31, 2025. End users are only eligible for one Envu incentive program on these invoiced products. Must be an end user with MER membership and accept current Terms and Conditions. Resale of product(s) purchased within this program will not qualify for rebates. If questions arise, please contact MER at 1-888-456-6464 or email [info@myenvurewards.com](mailto:info@myenvurewards.com). Envu reserves the right to modify any portion thereof, or discontinue this program without prior notice.

◇ TOPCHOICE, CHIPCO CHOICE AND RONSTAR FLO ARE RESTRICTED USE. For retail sale to and use only by Certified Applicators or persons under their direct supervision and only for those uses covered by the Certified Applicator's certification.

**ALWAYS READ AND FOLLOW LABEL INSTRUCTIONS.** Environmental Science U.S. LLC, 5000 CentreGreen Way, Suite 400, Cary, NC 27513. Not all products are registered in all states. Acclaim, Altus, Armada, Castlon, Celsius, Chipco, Dylox, Envu, the Envu logo, Forbid, Merit, Progress, Revolver, Ronstar, Specticle, Terradex, Tetrino, and Tribute are trademarks owned by Environmental Science U.S. LLC or one of its affiliates. ©2024 Environmental Science U.S. ES-0824-LL-334-P-R1

**Plan.  
Save.  
Thrive.**

ENHANCE  
YOUR IMPACT  
AND YOUR  
SAVINGS

Envu Early  
Order program

**From October 1 to December 6, 2024, save in 5 different ways:**

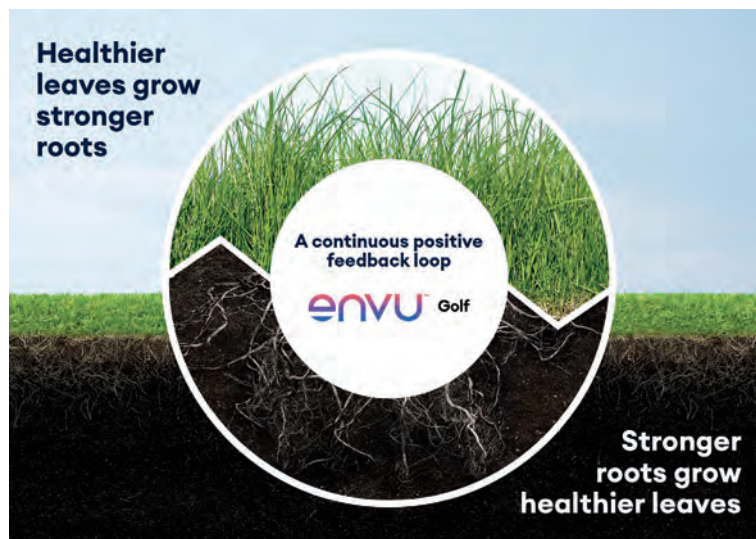
Off-invoice discounts, select product rebates, agronomic pairing incentives, Specticle Loyalty Bonus, FALL Purchase Tier Rebates

**June 6, 2025, payment terms on Fall Solutions Agency purchases**

**Easily calculate your savings**

Visit [rewards.envu.us](https://rewards.envu.us) to enroll in our benefits-filled Rewards Program, plus download an easy-to-use calculator spreadsheet

It's no secret that the healthier your turf is, the better it stands up against stressors like traffic, weather, disease and pests. That's why at Envu, we're focused on providing you solutions that not only treat your turf, but help fortify its overall health above and below ground.



Sign up for My Envu Rewards. Visit [rewards.envu.us](https://rewards.envu.us)

# Master the unpredictable by staying ahead of it



Green Solution Team Agronomic Program Recommendations	Products	Minimum Qty	Rate 2 (oz/1000)	Acres Treated	Pairing Rebate**† (per unit)	Select Rebate**† (per unit)	Total Invoice*	Max Savings w/ 9% Purchase Tier***†
<b>Greens Health</b> A "one-two" punch for Pythium diseases. Helps control Pythium Root Rot, foliar Pythium, and summer decline.	<b>Banol®</b>	2	2	7.3	\$75	\$25	\$7,135.20 w/Signature XTRA"	20%
	<b>Signature™ XTRA OR Chipco® Signature</b>	24 OR 12	4	12.1	\$10		\$6,933.60 w/Chipco Signature"	17%
<b>Snow Mold/Utility</b> Consistent, industry-leading snow mold control plus the benefit of early spring green-up from Stressgard formulations.	<b>Interface® Stressgard</b>	6	4	11.0	\$25	\$25	\$3,940.00	25%
	<b>Mirage® Stressgard</b>	2	1	14.7	\$25			
<b>Fairway Health</b> Dynamic Fairway Solution for mid-summer stress.	<b>Tartan® Stressgard</b>	6	1.5	29.4	\$30	\$20	\$11,496.00	22%
	<b>Exeris® Stressgard</b>	16	4	29.4	\$45			
<b>Fairy Ring</b> Master Fairy Ring and other turf diseases.	<b>Resilia™ Root Health Solution</b>	4	4	8.0	\$30		\$5,741.48	12%
	<b>Tartan Stressgard</b>	2	2	7.3		\$20		

ADD any of the products below to the pairings above for even better performance

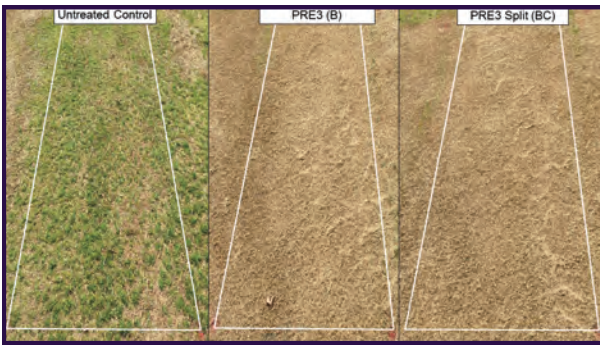


Products	Minimum Qty	Rate 2 (oz/1000)	Acres Treated	Pairing Rebate**† (per unit)	Select Rebate**† (per unit)
<b>Resilia Root Health Solution</b>	4	4	8	\$30	
<b>Densicor®</b>	4	0.196	23.9	\$35	\$35
<b>Castlon™ (1 gal.)</b>	1	0.18	16.3	\$50	

Note: If Resilia is added to Fairy Ring Pairing, no additional rebate is paid.

Additional Recommendations	Products	Minimum Qty	Rate 2 (oz/1000)	Acres Treated	Pairing Rebate**† (per unit)	Select Rebate**† (per unit)	Total Invoice*	Max Savings w/ 9% Purchase Tier***†
<b>MiraCast</b> A foundation for control of foliar and soilborne diseases and plant health.	<b>Castlon</b>	1 (1 gal. jug)	.09 - .36 fl. oz.	8.16 @ 0.36 fl.oz.			\$3,088.00	10.6%
	<b>Mirage Stressgard</b>	1 (2.5 gal. jug)	1 - 2 fl.oz. 0.6 fl. oz.	7.35 @ 1 fl.oz. 12.2 @ 0.6 fl.oz.*	\$50			

\*See 0.6 fl.oz. for warm season greens for Mirage Stressgard 2(ee) recommendation for use directions



## PRE3: Stay ahead of *Poa annua* and Save



Applying the PRE3 program in late fall provides proactive resistance management for maximum control of *Poa annua* across fairways and roughs all season long. Program is a tank mix of three sites of action Specticle FLO + Tribute Total + simazine. Earn rebates and save with Specticle FLO 1-6 unit price **\$100 lower** than in-season.

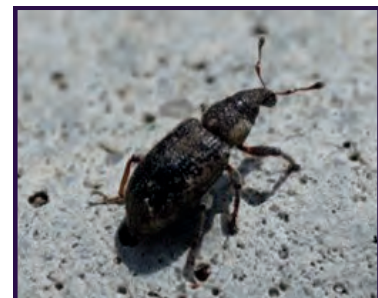
Additional Recommendations	Products	Minimum Qty	Rate 2 (oz/1000)	Acres Treated	Pairing Rebate**†	Select Rebate**†	Total Invoice*	Max Savings w/ 9% Purchase Tier**†
PRE3	Specticle FLO	2	0.138	42.6	+ Specticle Bonus see reverse		\$6,418.40	6.3%
	Tribute Total	6	0.023	35.9		\$30		

	Size	Qty	EOP Price*	Select Product Rebate**†	Available Pairing Rebate**†	Select, Pairing and Volume Discount Savings %***†	Saving % + Max Purchase Tier Rebate (9%)***†
<b>Fungicides</b>							
Banol®	2.5 gal. jug	1	\$1,254.00	\$25 (2 or more)	\$75	8%	17%
Chipco Signature Stressgard	11 lb. bottle	1 to 8	\$392.80		\$10	0%	9%
		9+	\$368.80			9%	17%
Castlon	1 gal. jug	1	\$2,600.00		\$50	2%	11%
Castlon	1 pint bottle	1	\$366.50			0%	9%
Densicor	51 fl. oz. bottle	1	\$739.60	\$35 (1 or more)	\$35	9%	18%
Exteris Stressgard	2.5 gal. Jug	1	\$366.00		\$45	12%	21%
Fiata® Stressgard	2.5 gal. Jug	1	\$190.00	\$8 (10 or more)		4%	13%
Interface Stressgard	2.5 gal. jug	1 to 5	\$561.00		\$25	0%	9%
		6+	\$494.00	\$25 (6 or more)		21%	29%
Mirage Stressgard	2.5 gal. jug	1	\$488.00		\$75	15%	24%
Resilia	2.72 gal. jug	1	\$918.87		\$30	3%	12%
Signature XTRA Stressgard	5.5 lb. bottle	1 to 23	\$210.40		\$10	0%	9%
		24+	\$192.80			13%	21%
Tartan Stressgard	2.5 gal. Jug	1 to 5	\$1,033.00	\$20 (2 or more)	\$30	2%	11%
		6+	\$940.00			12%	20%
<b>Insecticides/Nematicides</b>							
Altus®	64 oz. jug	1 to 15	\$428.40			0%	9%
		16 to 31	\$406.98			5%	14%
		32+	\$385.56			10%	18%
Indemnify®	17 oz. bottle	1 to 2	\$1,963.60			0%	9%
		3+	\$1,767.20			10%	18%
Tetrino	1 gal. jug	1	\$498.00	\$25 (4 or more)		5%	14%



Tetrino is proven to offer protection from one of the most difficult turf pests to manage: the annual bluegrass weevil. Studies have shown it's highly effective when applied in late April to early June after eggs hatch and then applied for a second time in early to mid-July after second-generation eggs hatch.

**Save \$25 per bottle with 4+ purchase during EOP\*\*†**



Herbicides					Specticle Loyalty Bonus Pairing			Saving % + Max Purchase Tier Rebate (9%)*†
Celsius®	10 oz. bottle	1	\$128.40	\$10 (8 or more)	Add Select Rebate quantities of Celsius, Celsius XTRA, Revolver and Tribute Total to Specticle FLO purchase and receive the bonuses below on all eligible brands purchased.			17%
Celsius XTRA	10 oz. bottle	1	\$166.40	\$10 (8 or more)				15%
Revolver®	87 oz. bottle	1	\$758.00	\$35 (4 or more)				13%
Tribute Total	6 oz. bottle	1	\$413.60	\$30 (6 or more)				16%
				Savings off in-season 1 unit price*	Add 1 Brand	Add 2 Brands	Add 3+ Brands	Saving + Max Loyalty Bonus***†† Specticle FLO counts towards purchase tier, but only paid Loyalty Bonus
Specticle FLO	1 gal. jug	1 to 6	\$1,968.40	5%	0.25%	0.50%	1%	6.0%
		7 to 13	\$1,895.88	8.5%	0.50%	1%	2%	10.3%
		14 to 25	\$1,657.60	20%	0.75%	1.50%	3%	22.4%
Other Herbicides								
	Size	Qty	EOP Price*	Select Product Rebate**†	Available Pairing Rebate**†	Select, Pairing & Vol. Discount Savings %***†		Savings % + Max Purchase Tier Rebate (9%)*†
Ronstar® FLO ◇	2.5 gal. jug	1 to 11	\$ 552.00			0%		Purchases count towards NOW/Fall rebate tier but do not receive a rebate
		12 to 39	\$ 453.00			18%		
		40+	\$ 393.00			29%		
Specticle G	50 lb. bag	1	\$ 128.00	\$11.50 (20 or more)		9%		18%
Non-Agency								
Fungicides								
26GT®	2.5 gal. jug	1						9%
Growth Regulator/Herbicides								
Acclaim® Extra	1 gal. jug	1		\$90 (1 or more)				9% plus Select Rebate
Acclaim Accelerate	.5 gal jug	1		\$2.75				
Acclaim Accelerate	2.5 gal jug	1		\$13.25				
Terradex™ Power Premix	2.5 gal. jug	1		\$11.25				
Revolver	32 oz. bottle	1						9%
Sencor®	5 lb. jug	1						9%
Proxy®	2.5 gal. jug	1						Purchases count towards NOW/Fall rebate tier but do not receive a rebate
Prograss® EC	2.5 gal. jug	1						
Insecticides								
Chipco Choice ◇	50 lb. bag	1						9%
Dylox® SL420	2.5 gal. jug	1						9%
Forbid®	8 oz bottle	1						9%
Merit® 75 WSP	4 x 1.6 oz	1						Purchases count towards NOW/Fall rebate tier but do not receive a rebate
Merit 2F	1 gal. jug	1						
TopChoice® ◇	50 lb. bag	1						

Total Purchases (NOW/Fall Solutions)*	Base Incentive** †	August 1-October 31 Bonus**†	Base + Bonus**†
\$5,000 - \$13,999	3%	1%	4%
\$14,000 - \$22,499	4%	1%	5%
\$22,500 - \$31,499	5%	1%	6%
\$31,500 - \$39,999	6%	1%	7%
\$40,000 - \$48,499	8%		8%
\$48,500	9%		9%



### Easily Calculate Your Savings.

Visit [rewards.envu.us](https://rewards.envu.us) to enroll in our rewards program and download an easy-to-use calculator spreadsheet. Scan to the QR code to the left.

\*Pricing for all states except CA or WA. Must be purchased on a single invoice to receive volume discount price. \*\*Must be registered in My Envu Rewards and accept current Terms and Conditions to participate. \*\*\*Savings compared to 1 unit at the National price. †Customer Fall Solutions and NOW Solutions promotional cumulative purchases (Aug. 1- Dec. 6, 2024) must be \$5,000 or more to qualify for program rebates. Purchase tier amount credited for non-agency products is predetermined by Envu and subject to change without notice. New members signed up before Dec. 31, 2024, will receive 2024 NOW/Fall Solutions rebates. All rebates for 2024 NOW/Fall Solutions will be paid in points, which can be redeemed for thousands of catalog items, distributor credits and/or company checks (no checks can be issued to a third party). All products must be invoiced between Oct. 1 and Dec. 6, 2024, to qualify for Fall Solutions. Rebate calculations will be based on the date of actual product invoice and calculator tools are provided for estimation purposes only. Rebates will only be paid or delivered to the company or name listed on the invoice. Please allow for rebates to be fulfilled by July 31, 2025. End users are only eligible for one Envu incentive program on these invoiced products. Must be an end user with MER membership and accept current Terms and Conditions. Resale of product(s) purchased within this program will not qualify for rebates. If questions arise, please contact MER at 1-888-456-4464 or email [info@myenvurewards.com](mailto:info@myenvurewards.com). Envu reserves the right to modify any portion thereof, or discontinue this program without prior notice.

◇ TOPCHOICE, CHIPCO CHOICE AND RONSTAR FLO ARE RESTRICTED USE. For retail sale to and use only by Certified Applicators or persons under their direct supervision and only for those uses covered by the Certified Applicator's certification.

**ALWAYS READ AND FOLLOW LABEL INSTRUCTIONS.** Environmental Science U.S. LLC, 5000 CentreGreen Way, Suite 400, Cary, NC 27513. Not all products are registered in all states. Envu, the Envu logo, 26GT, Acclaim, Altus, Banol, Caston, Celsius, Chipco, Densicor, Dytox, Fiata, Forbid, Indemnify, Interface, Merit, Mirage, Prograss, Proxy, Resilia, Revolver, Ronstar, Sencor, Signature, Specticle, Tartan, Terradex, Tetrino, TopChoice and Tribute are trademarks owned by Environmental Science U.S. LLC or one of its affiliates. ©2024 Environmental Science U.S. ES-0824-GLF-335-P-R1

# Make an impact with the 2024 Envu<sup>®</sup> Early Order Program

We are thrilled to announce that the 2024 Envu Early Order Program (EOP) has been expanded and enhanced for you to assemble the best offers for your customers! From **October 1, 2024, to December 6, 2024**, your customers can enjoy significant savings on our high-performance turf and ornamentals products.

We appreciate your support and as a token of our appreciation for your continued partnership, we've designed this kit to support your efforts in rolling out the program to your customers. Inside, you'll find all the tools and resources needed to maximize the benefits of our EOP, plus a few surprises just for you as a thank you for your loyalty.

## What's New This Year?

Based on customer and DSR research, we have retained the features that customers appreciate and added even more benefits to enhance their experience:

### • Retained and Enhanced Key Features\*

- Off-Invoice Discounts
- Pairing Rebates
- Select Rebates
- Purchase Tier Rebates
- Extended Terms: Agency products in the program are available with extended terms until June 6, 2025.

### • Added Flexibility with Traditional Golf Pairings

- Customers can now include popular solutions such as Resilia™ Root Health Solution, Deniscor<sup>®</sup>, and the new Castlon™ Fungicide to traditionally popular pairings.
- They can enjoy performance-enhancing add-ons that contribute to a higher rebate and purchase tier total.

### • Specticle<sup>®</sup> FLO Loyalty Bonus

- Your customers can qualify more easily for deeper off-invoice discounts on Specticle FLO – a trusted preemergence herbicide.
- For instance, the 1–6-unit purchase price is over \$100 less than the in-season price!
- Plus, buying Specticle FLO unlocks **ADDITIONAL** rebate potential on four other excellent herbicides, Celsius<sup>®</sup>, Celsius XTRA, Revolver<sup>®</sup> and Tribute<sup>®</sup>Total.
- Lawn care operators can bundle and save significantly, and golf customers purchasing PRE3 pairings can benefit from the new lower Specticle FLO pricing.

### • Merit<sup>®</sup> 2F and 75 WSP included for Golf & Lawn

- Lawn care customers can now more easily qualify for higher purchase tier rebates.
- For example, up to 14% rebates on new Cool Season Herbicides, thanks to the Select Product Rebate and Purchase Tier Rebate.

### • New Products!

- Competitive pricing on Cool-Season Herbicides, including Terradex™ and Acclaim<sup>®</sup> Accelerate.
- Castlon™ Fungicide available for both Golf and Lawn applications.

### • Ornamental EOP Program with Cross-Selling Opportunities

- In addition to off-invoice volume discounts (up to 10%), Ornamental growers can receive an additional rebate (up to 4%) by adding multiple Envu brands to their order.

### • Maximize Your Customers' Savings

- Utilize our easy-to-use downloadable calculators (on My Envu Rewards) to enter and optimize savings for your customers' orders.



**Scan for More EOP Info!**

Thank you for your ongoing business, collaboration and trust. Our dedicated team of industry experts is here to assist with any questions you may have about our products or the EOP program. We are excited to help you achieve outstanding results with your turf management and ornamentals production goals through the 2024 Envu EOP.

Kind regards,



Head of Turf and Ornamentals, Envu U.S.