



COMPLETE
*Synthetic
Turf*
SOLUTIONS



HERITAGE TURF CATALOG



A Cut Above the Rest



ARTIFICIAL TURF

Heritage Artificial Turf (HAT) stands out as the leading choice for artificial turf, available at Heritage Landscape Supply Group branches nationwide.

Each turf variant is meticulously crafted with the user's needs in mind, ensuring optimal performance for its intended application. Through years of working with manufacturing to create our own turf line, we have trialed numerous variations of turf. What we have created is an exclusive turf collection, resulting in true superior quality to all other options available on the market, while maintaining our commitment to a PFAS-Free environment.

We recognize the importance of selecting the ideal turf for your client, which hinges on factors like location, intended use and the individuals or activities that will engage with the turf. We provide a range of product lines to help you choose wisely. Each product is tailored for specific categories to meet your needs effectively.

When you choose HAT, you are choosing the finest in artificial turf, ensuring that your projects are truly **'A Cut Above!'**

HERITAGE FAMILY OF BRANDS





6 Tall Fescue Family



16 Golf Family



7 Pet Family

TABLE OF CONTENTS

Royal Family	5	Rye Family	12
Tall Fescue Family	6	Golf Family	16
Pet Family	7	Play Family	18
Non-Directional Family	8	Heatshield Family	20
Coronado Family	10	FAQ	22

APPLICATIONS

The key to artificial turf success

Finding the right turf for the right application is crucial to achieving outstanding results. Explore our tailored solutions to ensure you select the perfect turf for your needs:

Landscape Turf

This top-notch turf is ideal for residential lawns. Rest assured; your project will showcase premium, PFAS-Free turf that flawlessly emulates natural grass.

Commercial Turf

Our long-lasting products endure the test of time, retaining their pristine appearance well beyond installation. Safety is our top priority, reflected in our thorough third-party testing to ensure our turf is free from PFAS.

Golf Turf

Transform your customer's outdoor space into a golfing oasis with superior attention to detail. Our PFAS-Free products are crafted to match every golfer's needs. Whether you are looking for a conversation piece or a tour-grade quality putting green, you can bring their golf game home!

Pet Turf

Our artificial turf is specifically designed with pets in mind. Our products are engineered to resist absorption, drain quickly with an industry-leading drainage rate of 505 gallons per hour per square yard, and boast extra durability, all while being PFAS-Free.

Sports Application Turf

With our extensive range of products, we have everything you need for your next sports application, whether indoor or outdoor. Our range of turf boasts superior durability, capable of withstanding whatever you throw, hit, or slide on them. Keep your customers and athletes safe with our PFAS-Free turf.

Playground Turf

Ensure your turf installation is safe for all with our PFAS-Free turf. Featuring unrivaled natural colors, your project will stand out above the rest. Our fibers are designed to withstand high-traffic family or playground play, ensuring your project maintains its pristine appearance from installation onward.



LEARN MORE ABOUT OUR ANTIMICROBIAL BACKING

Prevents bacterial growth

Effectively inhibits the growth of mold, mildew, algae and other bacteria.

Keeps turf fresh & new

Protects against microbial deterioration, discoloration, odor and bio-fouling.

Tested and tried

Successfully passes ASTM E1428 (against pink stain), ASTM G21 (fungi), and ASTMAATCC Method 30 (mildew)

Doing your part

Antimicrobial Backing does not replace general maintenance of turf, which is essential for removing bacteria.

Explore our premium line crafted with industry-leading quality standards. Ideal for customers who want the best of the best for residential applications for their family and pets. This family of products can also be used as a fringe around putting greens. Not recommended for extreme high traffic applications such as school playgrounds.



Royal 89

Specifications

- Yarn Color: Summer Blend
- Thatch Color: Green & Tan
- Face Weight: 89oz
- Total Weight: 114oz
- Pile Height: 1.875"
- Yarn Type: PE with Texturized Tan & Green Thatch
- Roll Width: 15'
- Warranty: 15 years
- Backing: Polyurethane
- Traffic Level: Low to moderate
- Infill Required: 2 pounds per sq. ft.



Royal 69

Specifications

- Yarn Color: Summer Blend
- Thatch Color: Green & Tan
- Face Weight: 69oz
- Total Weight: 94oz
- Pile Height: 1.875"
- Yarn Type: PE with Texturized Tan & Green Thatch
- Roll Width: 15'
- Warranty: 15 Years
- Backing: Polyurethane
- Traffic Level: Low to moderate
- Infill Required: 2 pounds per sq. ft.



TALL FESCUE FAMILY

Experience the natural beauty of our Tall Fescue Family, expertly crafted to replicate the lush aesthetic of natural tall fescue grass found on the East Coast and Midwest. The rich, darker green tones of our Tall Fescue have gained popularity nationwide, making it a top choice for both commercial and residential settings.

Perfect for customers seeking kid and pet-friendly solutions, our Tall Fescue products (like the TF 75) offer exceptional versatility. Additionally, this turf is an excellent option for creating a realistic 1st and 2nd cut of rough around putting greens.



CLEAN + GREEN
ADVANCED
ANTIMICROBIAL
TECHNOLOGY

Tall Fescue 90

Specifications:

- Yarn Color: Late Summer - Dark Green
- Thatch Color: Green & Tan
- Face Weight: 90oz
- Total Weight: 115oz
- Pile Height: 2"
- Yarn Type: PE with Texturized Tan & Green Thatch
- Roll Width: 15'
- Warranty: 15 Years
- Backing: Polyurethane
- Traffic Level: High Traffic
- Infill Required: 2 pounds per sq. ft.



CLEAN + GREEN
ADVANCED
ANTIMICROBIAL
TECHNOLOGY

Tall Fescue 75

Specifications:

- Yarn Color: Late Summer - Dark Green
- Thatch Color: Green & Tan
- Face Weight: 75oz
- Total Weight: 100oz
- Pile Height: 1.875"
- Yarn Type: PE with Texturized Tan & Green Thatch
- Roll Width: 15'
- Warranty: 15 Years
- Backing: Polyurethane
- Traffic Level: High Traffic
- Infill Required: 2 pounds per sq. ft.



Our Pet Play product are designed with love and a deep understanding of your four-legged kids. We know what it takes to reduce odor and keep them happy. All our pet products feature our industry-leading KwikFlow Antimicrobial backing, allowing 505 gallons per hour per square yard of drainage.

We are so experienced that we even offer solutions for spaces shared by both two-legged and four-legged kids. Yes, we are that advanced! At Heritage, we understand how important it is to keep liquids moving in pet areas. Our Heritage Pet Play comes with KwikFlow backing which flows at 505 gallons per hour, 10 times more than traditional backings! Our Heritage Pet Play is also the #1 option for putting green fringes, ensuring versatility and top performance.



Pet Play

Specifications

- Yarn Color: Field/Apple/Olive
- Thatch Color: Green & Tan
- Face Weight: 60oz
- Total Weight: 85oz
- Pile Height: 1.125"
- Yarn Type: PE with Texturized Tan & Green Thatch
- Roll Width: 15'
- Warranty: 15 Years
- Backing: KwikFlow
- Traffic Level: High Traffic
- Infill Required: 2 pounds per sq. ft.



NON-DIRECTIONAL FAMILY

Discover the game-changing innovation of our Non-Directional (ND) Family. Designed to revolutionize the industry, ND turf allows installers to work faster and reduce waste by eliminating the grain and direction found in traditional artificial turf.

The various options in this family are defined by their face weight or density of fibers, ensuring you have the perfect choice for any project. Our ND products also feature our KwikFlow backing, boasting an industry-leading drainage rate of 505 gallons per hour.

Ideal for both commercial and residential settings, ND turf is perfect for creating kid- and pet-friendly spaces.



ND Summer 90

Specifications

- Yarn Color: Clover & Olive - Darker Green
- Thatch Color: Green & Tan
- Face Weight: 90oz
- Total Weight: 115oz
- Pile Height: 1.75"
- Yarn Type: PE with Texturized Tan & Green Thatch
- Roll Width: 15'
- Warranty: 15 years
- Backing: KwikFlow
- Traffic Level: High Traffic
- Infill Required: 2 pounds per sq. ft.



ND Summer 66

Specifications:

- Yarn Color: Field & Olive - Darker Green
- Thatch Color: Green & Tan
- Face Weight: 66oz
- Total Weight: 91oz
- Pile Height: 1.75"
- Yarn Type: PE with Texturized Tan & Green Thatch
- Roll Width: 15'
- Warranty: 15 Years
- Backing: KwikFlow
- Traffic Level: High Traffic
- Infill Required: 2 pounds per sq. ft.



NON-DIRECTIONAL FAMILY



ND Spring 94

Specifications

- Yarn Color: Field/Clover - Brighter Green
- Thatch Color: Green & Tan
- Face Weight: 94oz
- Total Weight: 119oz
- Pile Height: 1.75"
- Yarn Type: PE with Texturized Tan & Green Thatch
- Roll Width: 15'
- Warranty: 15 years
- Backing: KwikFlow
- Traffic Level: High Traffic
- Infill Required: 2 pounds per sq. ft.



ND Spring 70

Specifications

- Yarn Color: Field/Clover - Brighter Green
- Thatch Color: Green & Tan
- Face Weight: 70oz
- Total Weight: 95oz
- Pile Height: 1.75"
- Yarn Type: PE with Texturized Tan & Green Thatch
- Roll Width: 15'
- Warranty: 15 Years
- Backing: KwikFlow
- Traffic Level: High Traffic
- Infill Required: 2 pounds per sq. ft.



CORONADO FAMILY

The Coronado product line features a soft, thin denier polyethylene face fiber with advanced features like heat reduction technology and a three-dimensional cross-section to improve durability.

Coronado turf is ideal for customers seeking reliable solutions for both commercial and residential settings. Tailored for those needing kid- and pet-friendly turf, Coronado also provides excellent surfaces for creating 1st and 2nd cuts of rough around putting greens.



Coronado

Specifications

- Yarn Color: Field/Apple/Lime
- Thatch Color: Green & Tan
- Face Weight: 80oz
- Total Weight: 107oz
- Pile Height: 2"
- Yarn Type: PE with Texturized Tan & Green Thatch
- Roll Width: 15'
- Warranty: 15 Years
- Backing: Polyurethane
- Traffic Level: Moderate to High
- Infill Required: 2 pounds per sq. ft.



Coronado Play

Specifications

- Yarn Color: Field/Apple/Lime
- Thatch Color: Green & Tan
- Face Weight: 55oz
- Total Weight: 80oz
- Pile Height: 1"
- Yarn Type: PE with Texturized Tan & Green Thatch
- Roll Width: 15'
- Warranty: 15 Years
- Backing: Polyurethane
- Traffic Level: Moderate to High
- Infill Required: 2 pounds per sq. ft.





Coronado Premium

Specifications

Yarn Color: Field/Apple/Lime

Thatch Color: Green & Tan

Face Weight: 100oz

Total Weight: 127oz

Pile Height: 2"

Yarn Type: PE with Texturized Tan & Green Thatch

Roll Width: 15'

Warranty: 15 Years

Backing: Polyurethane

Traffic Level: Moderate

Infill Required: 2 pounds per sq. ft.



Coronado Platinum

Specifications

Yarn Color: Field/Apple/Lime

Thatch Color: Green & Tan

Face Weight: 100oz

Total Weight: 127oz

Pile Height: 1.625"

Yarn Type: PE with Texturized Tan & Green Thatch

Roll Width: 15'

Warranty: 15 Years

Backing: Polyurethane

Traffic Level: Moderate

Infill Required: 2 pounds per sq. ft.



RYE FAMILY

Quality meets affordability! Designed to mimic the aesthetic of natural rye grass, the Rye Family offers a budget-friendly option without compromising on quality. Our Desert Rye allows you to replicate the look of rye grass from the Southwestern United States, while our Winter Rye offers the appearance of overseeded rye during the winter months.

Ideal for both commercial and residential settings, Rye turf is perfect for customers seeking kid- and pet-friendly solutions. Additionally, this product line provides excellent surfaces for creating fringes around putting greens, ensuring top performance at an accessible price.



IMPORTED Heritage Rye 90

Specifications

- Yarn Color: Field Green/Olive
- Thatch Color: Green & Tan
- Face Weight: 90oz
- Total Weight: 115oz
- Pile Height: 1.75"
- Yarn Type: PE with Texturized Tan & Green Thatch
- Roll Width: 15'
- Warranty: 15 Years
- Backing: Polyurethane
- Traffic Level: High Traffic
- Infill Required: 2 pounds per sq. ft.





IMPORTED



IMPORTED



Heritage Rye 66

Specifications

- Yarn Color: Field Green/Olive
- Thatch Color: Green & Tan
- Face Weight: 66oz
- Total Weight: 91oz
- Pile Height: 1.75"
- Yarn Type: PE with Texturized Tan & Green Thatch
- Roll Width: 15'
- Warranty: 15 Years
- Backing: Polyurethane
- Traffic Level: High Traffic
- Infill Required: 2 pounds per sq. ft.

Heritage Rye 50

Specifications

- Yarn Color: Field Green/Olive
- Thatch Color: Green & Tan
- Face Weight: 50oz
- Total Weight: 75oz
- Pile Height: 1.56"
- Yarn Type: PE with Texturized Tan & Green Thatch
- Roll Width: 15'
- Warranty: 15 Years
- Backing: Polyurethane
- Traffic Level: Low to moderate
- Infill Required: 2 pounds per sq. ft.



RYE FAMILY



IMPORTED



Desert Rye Premium

Specifications

- Yarn Color: Field/Olive/Tan
- Thatch Color: Green & Tan
- Face Weight: 80oz
- Total Weight: 105oz
- Pile Height: 1.875"
- Yarn Type: PE with Texturized Tan & Green Thatch
- Roll Width: 15'
- Warranty: 15 Years
- Backing: Polyurethane
- Traffic Level: High Traffic
- Infill Required: 2 pounds per sq. ft.



IMPORTED



Desert Rye 65

Specifications

- Yarn Color: Field/Olive/Tan
- Thatch Color: Green & Tan
- Face Weight: 65oz
- Total Weight: 90oz
- Pile Height: 1.50"
- Yarn Type: PE with Texturized Tan & Green Thatch
- Roll Width: 15'
- Warranty: 15 Years
- Backing: Polyurethane
- Traffic Level: High Traffic
- Infill Required: 2 pounds per sq. ft.





IMPORTED Winter Rye

Specifications

- Yarn Color: Forest/Clover
- Thatch Color: Green & Tan
- Face Weight: 72oz
- Total Weight: 97oz
- Pile Height: 1.875"
- Yarn Type: PE with Texturized Tan & Green Thatch
- Roll Width: 15'
- Warranty: 15 Years
- Backing: Polyurethane
- Traffic Level: High Traffic
- Infill Required: 2 pounds per sq. ft.



GOLF FAMILY

Discover our premier selection of artificial golf turf, precisely designed by golfers, for golfers. With your golfing experience at heart, each product is tailored for optimal surface quality, speed, and color precision. Perfect for residential, commercial, or driving range settings, these products are specifically tailored for golf-related applications.



IMPORTED Augusta Putt

Specifications

- Yarn Color: Field/Spring - Brighter
- Thatch Color: N/A
- Face Weight: 36oz
- Total Weight: 61oz
- Pile Height: 0.5"
- Yarn Type: Texturized PP
- Roll Width: 15'
- Warranty: 15 Years
- Backing: Polyurethane
- Traffic Level: Moderate to High
- Infill Required: 2 pounds per sq. ft.



POA Annua Pro

Specifications

- Yarn Color: Sport/Lime - Neutral
- Thatch Color: N/A
- Face Weight: 44oz
- Total Weight: 69oz
- Pile Height: 0.625"
- Yarn Type: Texturized PP
- Roll Width: 15'
- Warranty: 15 Years
- Backing: Polyurethane
- Traffic Level: Moderate to High
- Infill Required: 3 pounds #50 or #60 sand



Tour Grade Bent Grass

Specifications

- Yarn Color: 4 Seasons
- Thatch Color: N/A
- Face Weight: 50oz
- Total Weight: 75oz
- Pile Height: 0.625"
- Yarn Type: Texturized Nylon
- Roll Width: 15'
- Warranty: 15 Years
- Backing: Polyurethane
- Traffic Level: Moderate to High
- Infill Required: 2 pounds per sq. ft.



Long Range

Specifications

- Yarn Color: Fairway Green
- Thatch Color: N/A
- Face Weight: 44oz
- Total Weight: 69oz
- Pile Height: 1"
- Yarn Type: PP Slitfilm
- Roll Width: 15'
- Warranty: 15 Years
- Backing: Polyurethane
- Traffic Level: High Traffic
- Infill Required: 6 pounds per sq. ft.



Driving Range

Specifications

- Yarn Color: Fairway Green
- Thatch Color: N/A
- Face Weight: 135oz
- Total Weight: 160oz
- Pile Height: 1"
- Yarn Type: Texturized PP
- Roll Width: 15'
- Warranty: 1 Year
- Backing: Polyurethane
- Traffic Level: High Traffic
- Infill Required: None



PLAY FAMILY

Created for active use, the Play Family turf is resilient to heavy traffic and offers excellent impact absorption. From Bocce ball to indoor sports, soccer fields to agility training, school playgrounds to gymnasiums, we've got your game covered!



Indoor Play

Specifications

- Yarn Color: Field Green
- Thatch Color: Green Thatch Only
- Face Weight: 48oz
- Total Weight: 113oz
- Pile Height: 0.875"
- Yarn Type: XP Pro with Green Thatch
- Roll Width: 15'
- Warranty: 5 Years
- Backing: 5mm Foam
- Traffic Level: High Traffic
- Infill Required: None



Bocce Play

Specifications

- Yarn Color: Field/Olive
- Thatch Color: N/A
- Face Weight: 36oz
- Total Weight: 101oz
- Pile Height: 0.625"
- Yarn Type: Texturized PE
- Roll Width: 15'
- Warranty: 5 Years
- Backing: 5mm Foam
- Traffic Level: Moderate to High
- Infill Required: None



Alternate color option:
Oyster Shell



Super Play

Specifications

- Yarn Color: Field/Apple/Olive
- Thatch Color: Green & Tan
- Face Weight: 60oz
- Total Weight: 85oz
- Pile Height: 1.125"
- Yarn Type: PE with Texturized Tan & Green Thatch
- Roll Width: 15'
- Warranty: 8 Years
- Backing: KwikFlow
- Traffic Level: High Traffic
- Infill Required: 2-3 pounds per sq. ft.



Kid's Play

Specifications

- Yarn Color: Field/Apple/Lime
- Thatch Color: Green & Tan
- Face Weight: 80oz
- Total Weight: 105oz
- Pile Height: 2"
- Yarn Type: PE with Texturized Tan & Green Thatch
- Roll Width: 15'
- Warranty: 15 Years
- Backing: Polyurethane
- Traffic Level: High Traffic
- Infill Required: 2 pounds per sq. ft.



HEATSHIELD FAMILY

The Heatshield Family stands out in the industry as one of the few products that won't melt due to reflective surfaces. Our 100% nylon Heatshield comes with a NO-MELT guarantee (against melting caused by reflective surfaces), making it an ideal solution for both commercial and residential settings.



Heatshield 80

Specifications

- Thatch Color: Green & Tan
- Face Weight: 80oz
- Total Weight: 105oz
- Pile Height: 1.75"
- Yarn Type: 100% Nylon
- Roll Width: 15'
- Warranty: 15 Years
- Backing: KwikFlow
- Traffic Level: High Traffic
- Infill Required: 2 pounds per sq. ft.



Heatshield 50

Specifications

- Thatch Color: Green & Tan
- Face Weight: 50oz
- Total Weight: 75oz
- Pile Height: 1.5"
- Yarn Type: 100% Nylon
- Roll Width: 15'
- Warranty: 15 Years
- Backing: KwikFlow
- Traffic Level: High Traffic
- Infill Required: 2 pounds per sq. ft.



TAKING HERITAGE ARTIFICIAL TURF TO THE MAX

Max Protection

What sets these turf options apart from the rest? Each of these lines feature advanced FiberArmor Technology. Let's take a closer look at what this entails.

FIBERARMOR COATING

ANTI-STATIC

Turf prevents friction which leads to electrical charges

ANTI-VOLATILE ORGANIC COMPOUNDS (VOC)

Coating prevents VOC and Ammonia compounds from emitting odor

ANTI-CALCIUM

Say goodbye to greying turf - FiberArmor coating prevents calcium from fully attaching to the turf

ANTIMICROBIAL BACKING

PREVENTS BACTERIAL GROWTH

Effectively inhibits the growth of mold, mildew, algae, and other bacteria

DOING YOUR PART

Antimicrobial Backing does not replace general maintenance of turf, which is essential for removing bacteria.

CLEAN, GREEN & SAFE

- Safe for kids and pets, a clean and safe environment.
- Usable in all regions and climates.
- Resistant to bacteria, mildew, and mold.
- Maintains aesthetic appeal in all seasons.
- Meets stringent environmental and safety standards.
- Industry leading 15 year* warranty



MAXProtection
ADVANCED
FiberArmor
TECHNOLOGY



KID'S PLAY MAX

Specifications

- Yarn Color :Field/Apple/Lime
- Thatch Color: Green & Tan
- Face Weight: 80oz
- Total Weight: 105oz
- Pile Height: 2"
- Yarn Type: PE with Texturized Tan & Green Thatch
- Roll Width: 15'
- Warranty: 15 Years
- Backing: Polyurethane
- Traffic Level: High Traffic
- Infill Required: 2 pounds per sq. Ft.



MAXProtection
ADVANCED
FiberArmor
TECHNOLOGY



PET PLAY MAX

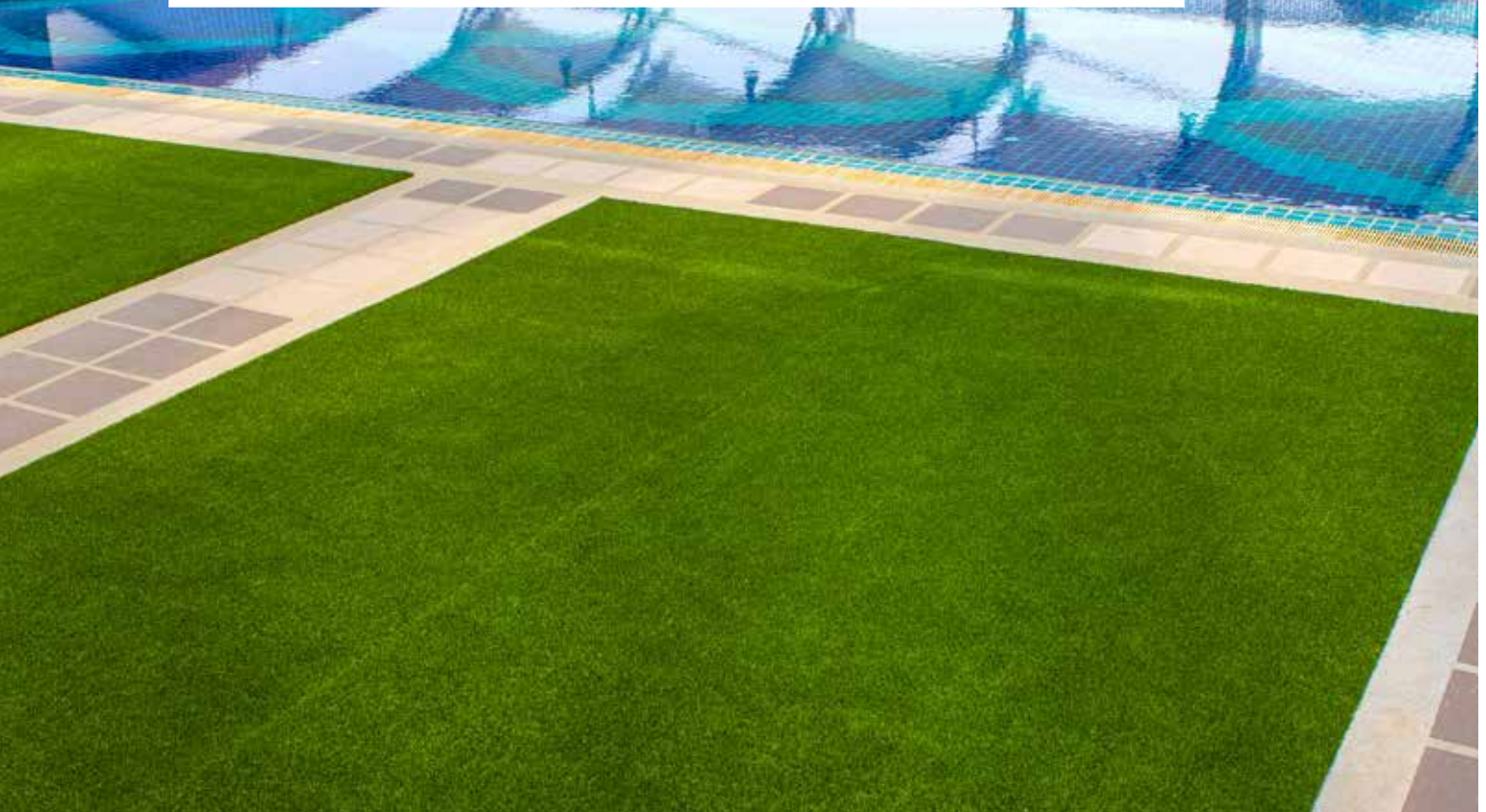
Specifications

- Yarn Color: Field/Apple/Olive
- Thatch Color: Green & Tan
- Face Weight: 60oz
- Total Weight: 85oz
- Pile Height: 1.125"
- Yarn Type: PE with Texturized Tan & Green Thatch
- Roll Width: 15'
- Warranty: 15 Years
- Backing: KwikFlow - Drains at 505 inches per hour per square yard
- Traffic Level: High Traffic
- Infill Required: 2 pounds per sq. ft.



WHY YOU SHOULD CHOOSE A HAT PRODUCT

HAT is crafted with cutting-edge, heat-reducing yarns and rigorously tested for durability. It supports healthier, chemical-free landscapes by reducing the need for pesticides, herbicides, and fertilizers. It's engineered by industry experts for discerning practitioners, ensuring every installation is top-notch in both aesthetics and function. HAT is the go-to for synthetic applications with unmatched quality, safety, and environmental benefits.





Is artificial turf only a drought alternative?

Not at all! It has become a lifestyle choice. For example, Texas and Florida are the #3 and #4 biggest synthetic turf states in the US, despite having plentiful rain. People choose it for safe, clean, and green environments because:

- **Water Conservation:** Eliminates need for watering, saving significant amounts.
- **Chemical Reduction:** No fertilizers, pesticides, or herbicides required.
- **Lower Emissions:** Reduces need for gas-powered lawn equipment.
- **Resource Efficiency:** Minimal upkeep needed after installation.
- **Sustainability:** Often made from and can be recycled into other products.

Synthetic turf isn't just about drought adaptation—it's an active contribution to a more sustainable landscape.

Why does Heritage offer so many choices?

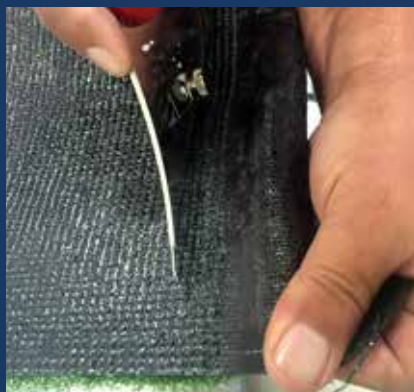
Our aim is to cater to every need, budget, and application. We want to ensure you never have to settle for a 'take it or leave it' situation.

Why are there so many different colors?

We offer a complete color range to suit your customers' preferences: Spring (brighter greens), Late Summer (darker greens), and Summer Blend (a mix of both).

Is artificial turf a viable business?

Yes, it boasts a high profit margin and the industry has tremendous growth ahead.



HAT Training

Are you interested in training for you and your employees? Consider a training session with our experts to learn more about artificial turf and how to install it. Each session includes one day of classroom-style presentations and a second day of hands-on learning.

Can't swing an in-person training? There's virtual options as well!



