



## Gravity<sup>®</sup> L 38 Special with TakeOff<sup>®</sup> Technology

Gravity L 38 Special is a superior, patented phosphite formulation, which helps increase plant metabolism and improve disease resistance. Now with TakeOff<sup>®</sup> technology which has been shown to increase the capacity of the plant to take up and utilize Carbon and Nitrogen applied to the rootzone of the plant. This allows for an increase in root and shoot development, as well as an increase in overall plant health. Research demonstrates that metabolic stimulation from Gravity 38 Special applications produce key plant compounds such as anti-fungal agents, hormones, and amino acids. Ingredients like organic acids, humectants and unique surfactants separate this superior phosphite formulation from the competition.

### APPLICATION RATE

**RATE:** 1 to 3.5 fluid ounces per 1,000 square feet every 14 days during active growth periods

**BACKPACK RATE:** 1 to 2 oz per gallon

### INGREDIENTS

5-0-15, Potassium phosphite, Ammonium phosphite and Potassium hydroxide

### FEATURES & BENEFITS

- Stabilized with proprietary organic amino acids to slow oxidation of PO<sub>3</sub>
- Inhibits reactions (chelators) with other cations or metals in solution and soil
- Reduces chances of phytotoxicity

### HERITAGELSG.COM • FOLLOW US @HERITAGEPPG

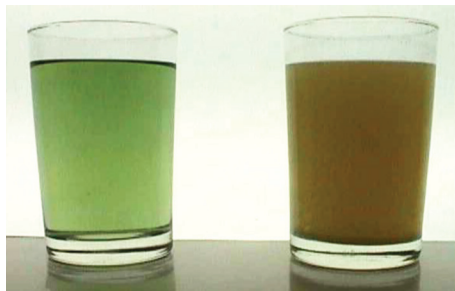
HERITAGE PROFESSIONAL PRODUCTS GROUP IS THE AGRONOMIC DIVISION OF HERITAGE LANDSCAPE SUPPLY GROUP

**ALWAYS READ AND FOLLOW LABEL DIRECTIONS** because of factors outside of Heritage Professional Products Group control such as weather, soil, planting, and product application; individual results to be obtained, including but not limited to: financial performance, profits, losses and yields cannot be predicted or guaranteed by Heritage Professional Products Group. Gravity is a registered trademark of Heritage Landscape Supply Group. ©2026 Heritage Landscape Supply Group.

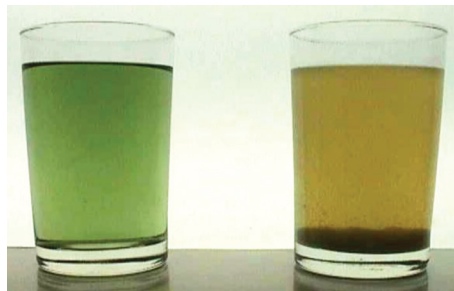


## PHYSICAL COMPATIBILITY

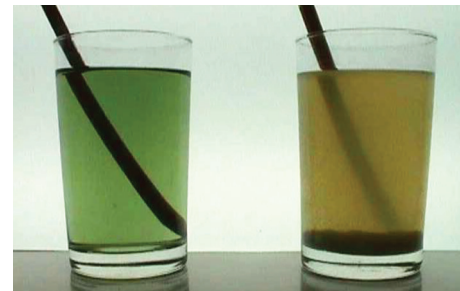
Stable vs Standard PO3 with metal cations such as Copper and Iron



1 MINUTE



5 MINUTES



10 MINUTE >

## HOW TAKEOFF® TECHNOLOGY DRIVES PLANT RESPONSE VIA THE GLUTAMATE CYCLE

- 1. PHOTOSYNTHESIS** takes in CO<sub>2</sub> to make glucose, priming the metabolic pump.
- 2. NUTRIENT ASSIMILATION** (17 essential nutrients) Nitrogen is critical in making amino acids. Need to be broken down into ammonia in order to be used by the plant.
- 3. GLUTAMATE PATHWAY** is a precursor to all amino acids. Glutamate combines with ammonia ion to form glutamine. Proline molecule "TakeOff" must be present for glutamate pathway to work. Proline molecule will become limited under stress. Keeps glutamate pathway operating in stressful conditions. The glutamate pathway is a circular pathway.
- 4. OUTPUT OF GLUTAMATE PATHWAY** is Amino Acids, Proteins, Lipids, Carbohydrates – build cell walls/ root hairs/ signals for plant defenses
- 5. RESULTS** of overall plant health lost when glutamine slows – therefore when adding TakeOff plants will have less senescence/ more root hairs/ etc.

